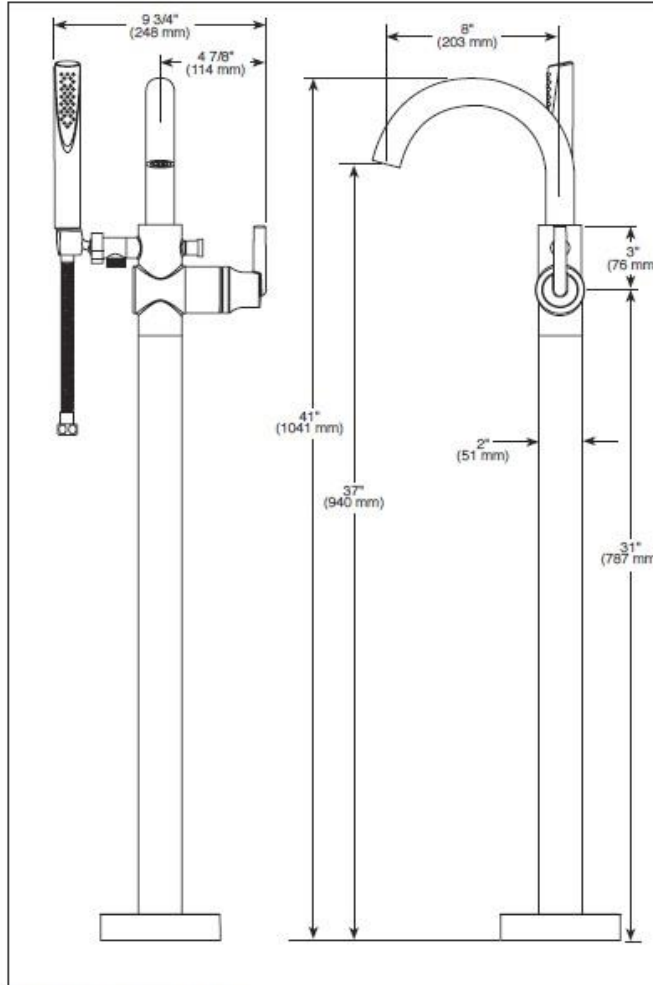


Modern Goose Neck Single Valve Faucet

Submitted Model No.: **T 4759 FL**
 Specific Features: _____



▲ Designate Proper Finish Suffix

STANDARD SPECIFICATIONS:

- Solid brass construction.
- Multichoice® pressure balance cartridge.
- Hot and cold indicators.
- Swing spout.
- 60°-90° stretchable hose with metal fittings.
- Auto resetting diverter.
- 2.0 gpm handshower with dual check valves.
- Optional high flow cartridge (RP73598) available.
- Pivot handshower holder.
- Must order R4700-FL.

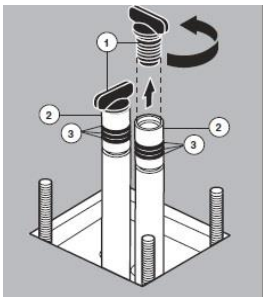
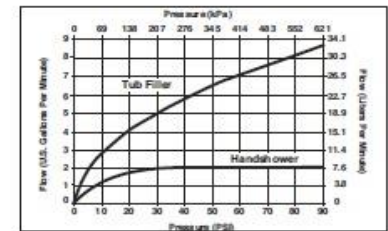
WARRANTY

- Lifetime limited warranty on parts (other than electronic parts and batteries) and finishes; or, for commercial users, for 5 years from date of purchase.
- 5 year limited warranty on electronic parts (other than batteries); or, for commercial users, for 1 year from the date of purchase. No warranty is provided on batteries.



COMPLIES WITH:

- ASME A112.18.1 / CSA B125.1
- Indicates compliance to
- ICC/ANSI A117.1 - Applies to valve control only.



RP51287 Stream Straightener, Gasket & Wrench
 Enderezador de Chorro, Empaque y Llave
 Concentrateur de Jet, Joint et Clé

RP74808▲ Holder Assembly
 Soporte de Montaje
 Support de Douche

RP73384▲ Handshower
 Regadera Manual
 Douche à main

U495D-▲60-PK Hose
 Manguera
 Tuyau souple

▲ Specify Finish
 Especifica el Acabado
 Précisez le Fini

RP74811▲ Spout Assembly
 Ensamble del Tubo de Salida
 Bec

RP74809▲ Finial
 Perilla
 Bouton

RP46074 Valve Cartridge
 Válvula de Cartucho
 Cartouche

RP4993 Seats & Springs
 Asientos y Resortes
 Sièges et Ressorts

RP14414 O-Rings
 Anillos "O"
 Joints Toriques

RP22734 Bonnet
 Capuchón
 Chapeau

RP23336 O-Ring
 Anillo "O"
 Joint Torique

RP74818▲ Trim Sleeve
 Manga de Franja
 Manchon de Finition

RP25620 Set Screw
 Tornillo de Ajuste
 Vis de Calage

RP73375▲ Handle
 Manija
 Manette

RP74819 Nuts & Washers
 Tuercas y Arandelas
 Ecrus et Rondelles

Optional:
 Order RP73598 for increased flow rate.
 Non-pressure balance cartridge will replace RP46074.

Opcional:
 Ordene RP73598 para aumentar el caudal. El cartucho con equilibrio sin presión reemplazará RP46074.

Facultatif:
 Commandez l'article RP73598 pour accroître le débit. La cartouche sans équilibrage de pression remplace l'article RP46074.